

[MINE] GALLERY  CARSHALTON

JOHN STILLMAN

ABEL KESTEVEN

1<sup>ST</sup> - 31<sup>ST</sup> AUGUST 2011

**SHOW EXTENDED**

DUE TO POPULAR DEMAND



APRIL MORNING, FESTIVAL WALK OIL (DETAIL)



WINNERS ENCLOSURE CONTE ON PAPER (DETAIL)

## JOHN & ABEL

REQUEST THE PLEASURE OF YOUR COMPANY ON  
**THURSDAY 25 AUGUST 2011**

FOR A PRIVATE VIEW OF THEIR WORK

AT THE [MINE] GALLERY

CARSHALTON HIGH STREET - A232 - FROM 6PM UNTIL 9PM

A JOINT EXHIBITION OF PAINTINGS & SCULPTURE

**RSVP NOT REQUIRED BUT APPRECIATED**

EXHIBITION OPEN MONDAY TO SATURDAY 11AM - 5PM

[WWW.MINEONLINE.CO.UK](http://WWW.MINEONLINE.CO.UK) 020 8647 1800

---

# FOREWORD

---

Abel and John are both good friends and good artists. This is their first joint exhibition and their individual styles complement each other to produce a show of great range of subject and medium, including sculpture. Both work in different ways to produce original images of people, animals and landscape.

I have observed their individual working methods 'plein air' for myself at Epsom Racecourse. John will be seen in the distance over by the mile and a half start working away quietly but always worrying about the quality of the light. Abel will be up in the stands looking down on the crowds recording movement, atmosphere and colour of the occasion in quick pastel sketches. John records people and horses in their natural landscape while Abel records individual moments of humanity in a crowd.

Both artists have enjoyed the challenge of putting the show together over the last few months and are delighted to display their work in this most impressive gallery space. I hope this may be the first of many joint exhibitions of their work.

Dr Nigel T. Cooke , July 2011



---

[MINE] GALLERY

---

WWW.MINEONLINE.CO.UK

---

30-34 HIGH STREET CARSHALTON  
SUTTON, SURREY SM5 3AG 020 8647 1800

---

# JOHN STILLMAN



John Stillman was born in Carshalton, Surrey in 1968. He is completely self taught and has been drawing and painting ever since he can remember.

John has worked as an illustrator for books and as a graphic artist in advertising in London. He now paints full time as a professional artist and his many subjects include landscapes and scenes of Surrey, as well as marine paintings, all of which focus on capturing the delicacy and beauty of light and atmosphere.

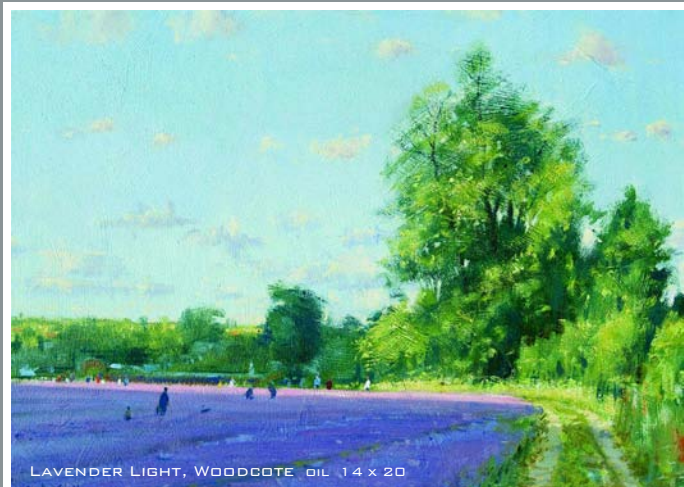
In addition to this work John also records the unique atmosphere of events such as a day at the Epsom races, the excitement of bonfire night, the thrill of sledging on a cold winters day in Carshalton Park and the wonder of a trip to Zippos Circus.

John has also exhibited extensively with the following galleries: The Wold Galleries, The Hicks Gallery, The David Curzon Gallery, The Llewellyn Alexander Gallery and Lincoln Joyce Fine Art and W.H. Pattersons.

As well as his solo exhibitions John is a regular exhibitor at The Royal Society of Marine Artists, The Royal Institute of Oil Painters at the Mall Galleries in London and also at The Royal Academy in London. He is a council member of The Chelsea Art Society and is a member of The Croydon Art Society where he exhibits his pictures annually.

John is also a member of the highly respected Wapping Group of Artists, a companionable band of just 25 dedicated and capable plein air painters who record and interpret the daily life, activities, industry and passage of time along the River Thames.

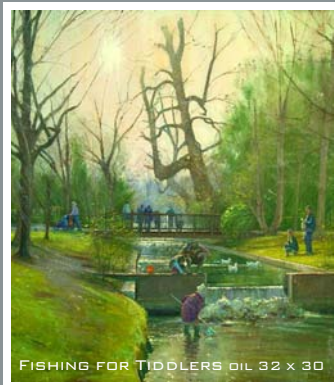
# JOHN STILLMAN



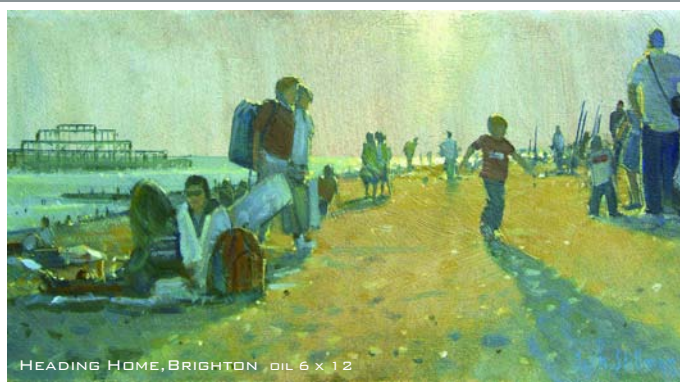
LAVENDER LIGHT, WOODCOTE oil 14 x 20



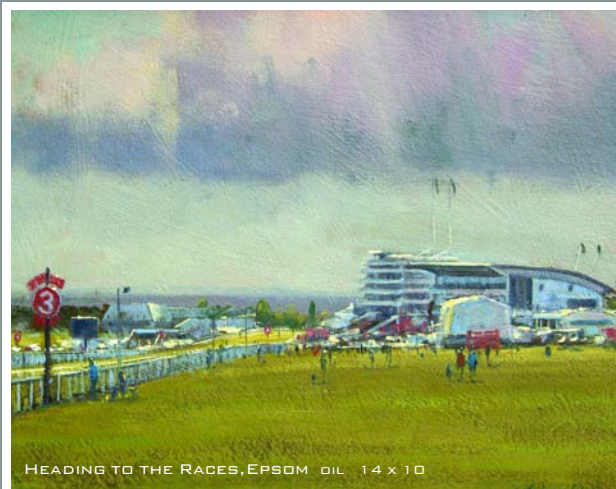
FIREWORKS I, CARSHALTON PARK  
oil 10 x 6 (DETAIL)



FISHING FOR TIDDLERS oil 32 x 30



HEADING HOME, BRIGHTON oil 6 x 12



HEADING TO THE RACES, EPSOM oil 14 x 10



SLEDGING,  
CARSHALTON PARK oil 48 x 40

# ABEL KESTEVEN



AT THE START, EPSOM / CONTE ON PAPER (DETAIL)

Drawing is fundamental in every aspect of Abel's work. Whether it is a landscape, the moving figure, or through the medium of clay, line is the key.

His use of colour, also integral, inspired in part by the German expressionists and the Fauvist movement, gives the viewer a sense of mystery when first viewing his paintings. Like a picture puzzle to solve.

Abel's reluctance to overwork his pastels/ paintings gives them a freshness often lacking in other artists. The suggestion of a figure, a horse, or a circus entertainer, can have so much more impact when not spelt out. The preoccupation with the spectators at the racecourse in Epsom, or the audience at Zippos Circus, always hold as much interest for Abel as the actual event itself.

Through his teaching work with adults with autism and those with mental health problems or learning difficulties, Abel has been inspired by their freedom of expression and unconventional and

immediate approach. In recent years he has injected a humour in his work, mostly through the use of clay, but also within his unique monoprint techniques.

Abel chooses to distort his figures when working in three dimensions, giving them a dynamic sense of movement and of the heroic! His cats and dogs also tend to be robust and characterful and display a 'cheekiness' (which many cat and dog owners would be familiar with!) It has been commented that Abel's work appears to have come from more than one artist. On closer inspection however, it quickly becomes apparent that the common theme is the strong sense of movement and colour, but most significantly, the importance of line and of drawing.

# ABEL KESTEVEN

PORTRAIT OF SAM CONTE ON PAPER



FAT CAT  
GLASS MONOPRINT



ICE DANCER  
SCULPTURE



THE BOXER  
SCULPTURE



BETWEEN RACES CONTE ON PAPER (DETAIL)



PATHWAY THROUGH THE TRESS ACRYLIC ON PAPER (DETAIL)



POPLARS BY THE WATER  
ACRYLIC ON PAPER